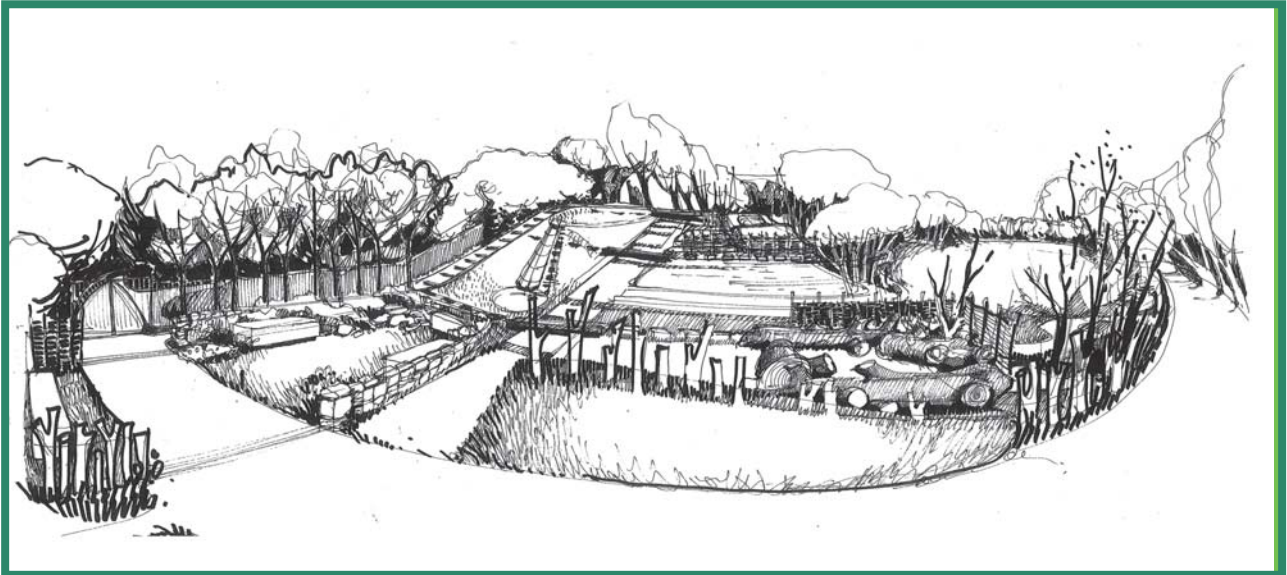


Case Study 9

David Livingstone Centre Landscape Master Plan



Central Scotland Green Network



A far-reaching Landscape Master Plan has been developed to integrate the David Livingstone Centre with the wider landscape of the Clyde Valley and Clyde Walkway creating a centre of education and exploration. Part of this vision is 'The Works', a unique Natural Play Area developed in the grounds of the Centre.

Context

The David Livingstone Centre in Blantyre, South Lanarkshire celebrates one of Scotland's most significant historic figures. Livingstone was a doctor, an explorer, a missionary, a writer and a man of faith. He rose from being a child worker in the Blantyre Works cotton mills, to being a pioneer of African exploration, with a key role in the anti-slavery and humanitarian movements of the nineteenth century. Livingstone's legacy lies in the roots of fair trade, international development and humanitarian aid. 2013 marks the bi-centenary of Livingstone's birth in Blantyre.

The heart of the David Livingstone Centre is a museum created in the house where Livingstone was born. This sits in an estate comprising 11ha of formal lawns, meadow and woodland on the edge of the River Clyde. The river bank forms the edge of the Bothwell Castle SSSI ancient woodland.

"The Works' is a marvellous surprise as you come over the hill, the size and scale of the site is really wonderful, quite unexpected. It really has been amazing to see the transformation of the site from a long grass meadow to this fantastic play area with beautiful willow tunnels, climbing blocks, cherry trees and a lovely wall for sitting on."

Phyllis Crossan
National Trust for Scotland

Project Background

The David Livingstone Trust working in partnership with South Lanarkshire Council and the National Trust for Scotland commissioned the development of a Master Plan. It seeks to reinvigorate the estate landscape at the David Livingstone Centre with the core goal

Key Points

- The Master Plan is designed to bring more people to the David Livingstone Centre by ‘unpacking the museum’ into its wonderful estate landscape.
- It places the museum into context as a service hub for the Clyde Valley and a key stopping place on the Clyde walkway.
- It creates sensitive access into an important historic and ecological landscape.
- It develops a new play ground that is designed specifically for this historic and environmentally unique place.

of increasing visitor numbers to the Museum. Developed by ERZ Landscape Architects, the Master Plan’s main objective is to ‘unpack the museum’ into the landscape creating a centre for exploration and education. The Master Plan ties the David Livingstone Centre into the wider landscape of the Clyde Valley and Clyde Walkway.

What it Does

The Master Plan uses old pathways and drovers trails to form a framework for new access into the landscape. It continues and develops access into the SSSI Plantation Woods to create a new three mile long ‘Zambezi Trail’ honouring Livingstone in his Bi-Centenary Year.

New woodland planting which will enhance the status of the SSSI supports the path system. Unique landscape features that are currently lost, such as old quarries, burn crossings, lost pathways, wonderful views and ruins will be carefully opened up and brought back to life to create a unique visitor destination.

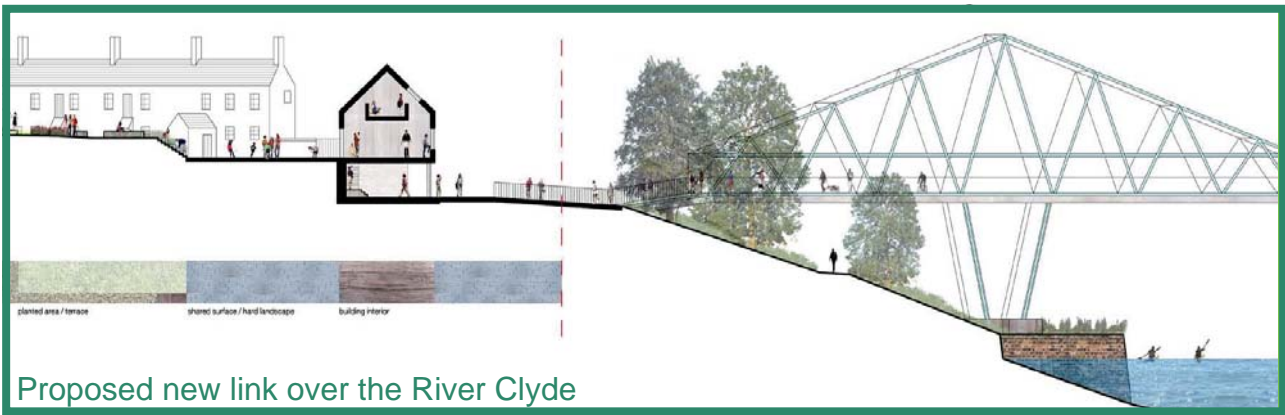
The play area is the first phase of this vision



to be realised on the ground. It has created a new focus for play and outdoor learning that can be used by locals and by museum visitors as a play and learning resource. The play area draws on the industrial scale and geometry of the cotton mills, and the aesthetic of the wider landscape of the river valley. It is also inspired by building techniques used in Malawian vernacular architecture, as a reference to Livingstone’s travels in Africa.

Based on ‘natural play’ principles, the play area used locally available natural materials to create a site-specific design. This is really a landscape for play rather than a ‘play ground’. It has good spaces to play in, sit on, learn and work in, but it also has elements for climbing, scrambling, rolling, jumping, balancing, crawling, exploring, as well as dens, outdoor classrooms and trees.

Whilst the play area has an architectural structure, and a geometry that relates to the Master Plan, it is also formed from natural materials that challenge children with inconsistencies and non-conformities – this enhances developmental learning, for



Proposed new link over the River Clyde

example improving the child’s risk assessment capabilities.

CSGN Support and Learning

The CSGN Development Fund directly contributed towards the development of the landscape Master Plan for their grounds surrounding the David Livingstone Centre.

As well as the natural play area, the Master Plan includes designs for new planting and path networks. It is anticipated that this investment will help to create a dynamic new visitor hub for the Clyde Valley, strategically located to benefit the entire area.

The Master Plan provides a holistic approach which will help realise the vision of the creating a flagship project of historical, cultural and environmental importance within the area. This will help drive the development forward in a sustainable and integrated manner.

Future

The new play area represents an important step in a journey that will reinvigorate the site

over the next three years.

Key proposals, as identified in the Master Plan, seek to ‘unpack the museum’ into the landscape, offering a curated landscape of art, trails, play, education and events.

The strategic importance of the centre as a hub for the Clyde Valley will be emphasised and the Master Plan seeks to improve connections to the station, the Clyde Walkway, Redlees Quarry, Bothwell, Blantyre and other Clyde Valley attractions.

Key spaces will be created designed for events, orientation, shelter and viewpoints along the riverside. Additional art works, such as life-size elephant sculptures, will create landmarks. A new arboretum will be established to celebrate the 2014 Commonwealth Games and the links between Scotland and its Commonwealth partners including Livingstone’s Africa.

Also, the project partners are currently working with Liber8 to engage a group of local teenagers in the development of an adjacent garden as part of the John Muir Awards Programme.

Outcomes

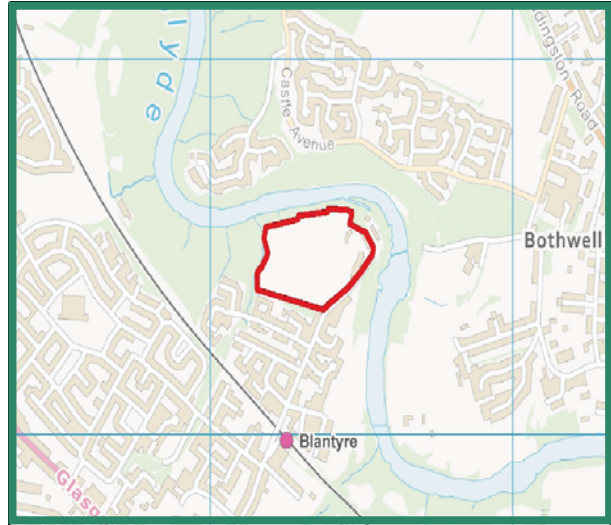
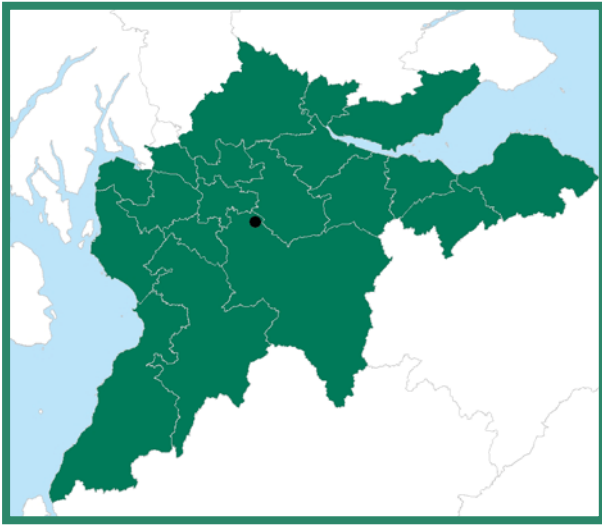
Improved Access to Greenspace: By opening up traditional routes and creating new ones, local people and visitors to the area will benefit from better access to greenspace.

Healthier Children: ‘The Works’ play area is an ideal environment for children to improve physical strength, it also encourages the development of risk perception and encourages them to engage with and explore the natural environment.

Increased Tourism: The realisation of the master plan will create a visitor attraction and surrounding landscape of international importance which will increase visitor numbers and provide a boost to the local economy.

Location

The maps below show the location of the David Livingstone Centre.



© Crown Copyright and database right 2012. All rights reserved. 100002151.

Contact

Andrew Smith, Secretary, David Livingstone Trust
aas@businesslaw.co.uk

Project Partners

David Livingstone Trust
Forestry Commission Scotland
National Trust for Scotland
South Lanarkshire Council

What is the CSGN?

The CSGN is a national development within the National Planning Framework which aims to make 'a significant contribution to Scotland's sustainable economic development'. It involves public agencies and stakeholders (those with an interest in our work) working together to align their policies, programmes and actions to achieve a common aim. That aim is to change the face of Central Scotland by restoring and improving the rural and urban landscape of the area.

Getting in Touch

To discuss this case study please contact: Stephen Hughes, Monitoring & Evaluation Officer, Central Scotland Green Network Support Unit. E-mail: stephen.hughes@centralscotlandgreennetwork.org

For further information on other case studies please visit: www.centralscotlandgreennetwork.org