

CENTRAL SCOTLAND GREEN NETWORK

PARTNERSHIP BOARD MEETING

27 JANUARY 2012

BOARD MEETING

**SCOTTISH ENTERPRISE OFFICE
ATRIUM COURT, 50 WATERLOO STREET
GLASGOW G2 6HQ**

**1.30pm – 4.00pm
(sandwich lunch will be available from 12.45pm)**

AGENDA

- 1 Welcome & Apologies – Apologies from Chris Nevin
- 2 Minutes of Meeting of 17 November 2011 (attached)
- 3 Matters Arising Paper (Paper 1)
- 4 Chairperson's Report (Verbal)
- 5 Outline CSGN Work Plan 2012 – 2015 (Paper 2)
- 6 Update on the John Muir Way (Paper 3)
- 7 Report on the Landscape Audit and Landscape Action Plan (Paper 4)
- 8 CSGN Risk Register (Paper 5)
- 9 Inner Forth Landscape Initiative (Paper 6)
- 10 Activities by FCS (Paper 7)
- 11 Activities by SNH (Paper 8)
- 12 Activities by CSGNSU (Paper 9)
- 13 Any Other Competent Business
- 14 Date of Next Meeting – 15 March 2012 at Edinburgh City Council, City Chambers, Dunedin Room, High Street, Edinburgh EH1 1JY

CENTRAL SCOTLAND GREEN NETWORK

Report to: CSGN Partnership Board

Date of Meeting: 27 January 2012

Subject: Matters Arising

Ref: Paper 1

Item No	Matter	Action
3	Vision letter to be sent to Homes for Scotland Members.	Z cards sent to Homes for Scotland for distribution with the Vision letter
3	Parliamentary Event	Likely to take place in September 2012 Neil Hepburn, MSP is assisting with arrangements and has agreed to sponsor the event.
5	Learning Spaces Report	Summary has been produced and is with FCS and SNH for comment. Dissemination plan prepared ready for issue.
	2012 Awards & Sponsorship update	To be discussed with Chair once 2012 Event Plan is in place.
4 & 9	2012 Forum update	Derek Mackay MSP, Minister for Local Government and Planning has agreed to be the key note speaker. Provisional date: 12 June Venue: TBC
5	Community Project Fund – list of successful applications to be prepared for information	To be distributed to Board members by e-mail once complete
6	CSGN to feed into the NPF2 monitoring review	FCS reporting as required
6	CSGN to make contact with NPF3 liaison team to showcase what CSGN can/is delivering	Initial contact made by FCS
7	Update from the board priorities vote	See Paper 2
8	Budget distribution from April 2012	Budget Allocation to reflect work plan content. Paper to be prepared for March meeting
9	John Muir Trail – technical study update	See Paper 3

CENTRAL SCOTLAND GREEN NETWORK

Report to: CSGN Partnership Board

Date of Meeting: 27 January 2012

Subject: CSGN Work Plan 2012 - 2015

Ref: Paper 2

Purpose of Report

This paper introduces the first draft of the proposed 2012 – 2015 CSGN Work Plan which has been developed since the Board agreed its strategic priorities in November 2011.

Recommendations

The Board is asked to consider the outline draft and:

- Give its approval to the **general structure** and proposed **content** of the document or instruct changes;
- Consider whether the **Strategic Intent** still holds good;
- Consider whether the **2015 milestones** (see Annex 2.1) proposed for the Board's priorities are appropriate and sufficiently ambitious;
- Note that the focus on Lead Partners' priorities is useful in ensuring we continue to deliver (some of) the key elements set out in NPF2; and
- Confirm if reporting on the most important 30 targets will be sufficient for the Board to track progress on key items.

Background

Attached to this report (Annex 2.1) is a first draft of the proposed 2012 – 2015 CSGN Work Plan. Whilst its format is similar, it has fewer sections than its predecessor (March 2011). It differs from the current document in that it aims to set out key areas which the Board and Lead Partners wish to focus on. It also seeks to reflect relevant work of members of the newly formed CSGN Regional Advisory Forum and other partners.

Section 3, Strategic Context includes reference to the recent Comprehensive Spending Review.

Section 4, sets out the Strategic Intent for the plan period. Is the Board happy that these remain relevant?

Section 5, summaries the more detailed theme-based and enabling actions which will be set out in the annexes in the work plan. To aid discussion, Annex 2.1 to this report extracts the 2015 milestones set out in Appendix 1 of the work plan. Is the Board content with these milestones, particularly in terms of ambition and generation of flagship projects? Once the milestones have been agreed, the text currently in yellow will be amended to suit.

Section 6, highlights areas where we are still struggling to find ways in which to deliver the Vision. However, the position is improving; last year seven gaps were identified (many of which have become Board priorities); this year there remain 3 gaps to address in future.

Appendix 1, Board Focus sets out the proposed actions to deliver the Board's priorities identified at the November Board meeting. The numbering and formatting will be tidied up for the final draft, but have been kept the same as the November papers to allow direct read across.

To recap, the Board prioritised actions: 3, 5b, 10b, 8a and 9; and expressed the desire to deliver also 1, 2, 10a, 8b and 11. In discussion with the Lead partners and the Chair, it was decided that CSGN was not in a position to offer anything strategic in terms of 11 (Volunteering) so this action was not pursued further.

Appendix 2, Lead Partner Focus sets out the actions (beyond the Board priorities) that the lead partners intend to take to deliver the CSGN. Whilst several of these could be described as 'business as usual', they are in fact critical to delivering some of the required elements set out in NPF2. Again, the numbering and formatting will be tidied up for the final draft, but have been kept to allow direct read across to the November papers.

The following table seeks to show the fit between NPF2, the Vision actions, Board and Lead Partner Priorities if we proceed with the plan as proposed.

Vision	NPF2 elements	Board Focus to 2015	Lead Partner Focus
1. Places for business and enterprise (V&DL)	✓	<input checked="" type="checkbox"/>	✓
2. Green Network Businesses (case studies and champions)		<input checked="" type="checkbox"/>	
3. Green Skills (E&T)		✓	✓
4a. Climate Change Mitigation (woodland creation)	✓		✓
4b. Climate Change Mitigation (peatland management)			✓
5a. Climate Change Adaptation (flood management)	✓		
5b. Climate Change Adaptation (urban greening)	✓	✓	
6. Environmental Management (RBMP/IHN)	✓		✓
7. Health Promoting Environments (NHS estate)			✓
8a. Active Spaces (GN policy and planning)		✓	✓
8b. Active Spaces (access and active travel)	✓	<input checked="" type="checkbox"/>	✓
9. Growing Spaces (Community growing)		✓	
10a. Places for Life and Learning (greenspace around homes)		<input checked="" type="checkbox"/>	
10b. Places for Life and Learning (greenspace around schools)		✓	✓
11. Getting Involved (volunteering)		<input checked="" type="checkbox"/>	
12. Social Spaces (cultural greenspace)			
13. Integrated Habitat Networks (embedding the IHN)	✓		✓
14. Species Action (riparian invasive non-natives)			✓
15. Landscape Action (peri/urban fringe)	✓		✓

Board's lower priorities

In both Appendix 1 and 2, we have captured input from regional partners. This provides better context in terms of what is already happening and in some cases has highlighted partners to help deliver the intended actions.

Appendix 4, Key Targets for 2012/13 will set out the 30 most significant activities. Progress on these will be reported to the Board in addition to the partner/SU update papers. The remaining actions will be monitored by the Lead partners and Support Unit and will only be reported upon by exception. Are Board members content with this as an approach?

Next Steps

The intention is to complete the plan, incorporating comments from the Board and any further partner input. A final draft will then be brought to the March Board for sign off prior to submission to FCS and SNH as joint lead partners as part of oversight of CSFT/CSGN SU.

At the March meeting, we would also intend to submit a paper confirming the CSGN SU Budget for 2012/13 explaining how the budget allowance for 'Studies/Projects' is proposed to be allocated. Again this requires to be lodged with FCS before the year end.

Conclusion

The proposed work plan captures activities for the lead partners, Support Unit and (some of) our other partners for the three fiscal years commencing in April 2012. A focus on Board and Lead Partner priorities has allowed a much more considered plan to be developed. However, it is still demanding and will be stretching particularly if it proves difficult to find additional resourcing or partners willing to engage in some of the actions.

Author: **Sue Evans, CSGN Support Unit**
Date: **19 January 2012**

A Place for Growth

1 Places for business and enterprise

- Analysis of VDL Register undertaken to identify sites with greatest impact from/opportunity for greening – including sites that have/are naturally greening and can be removed from the register with minimal intervention
- Green end uses more commonly utilised in the VDL register when identifying preferred and intended end uses
- ‘Greening’ (including temporary greening) of VDL specifically acknowledged as a legitimate goal in relevant Scottish Government policies and programmes
- ‘Greening’ (including temporary greening) of VDL specifically acknowledged as a legitimate activity with relevant funding streams
- Small number of pilot sites delivered or underway (in addition to those already underway by FES and ELGT)
- Alternative funding models for VDL greening analysed and disseminated
- Case studies of best practice mechanisms and approaches in greening of VDL identified, published and disseminated, with relevant site case studies
- Technical guidance developed and disseminated to address any gaps identified in current advice.

2 Green Network Businesses

- Case studies completed and disseminated
- Business champions identified and working to promote the CSGN and GN actions in their sectors
- Methodologies to increase involvement with and by businesses have been identified and reported to the Board
- CSGN is sponsoring a Business Award
- A new funding mechanism has been agreed ready to launch in 2016.

3 Green Skills

- A structural policy link has been made by the Scottish Government between the delivery of the CSGN and the need to create training and employment opportunities.
- That link has led to a dedicated programme within wider Scottish Government and DWP programmes supporting employers and training providers to engage unemployed people in CSGN activity.
- The CSGN programme will have a specific focus on the younger cohort of 16 to 15 year olds.

A Place in Balance

5b Climate Change Adaptation

- Priority areas for urban greening to meet climate change needs have been identified and communicated
- The Climate Change Adaptation Framework and the GCV Adaptation Strategy and partners to these plans recognise the potential contribution of urban greening to addressing climate change
- Demonstration projects are underway to test retrofitting solutions within existing built environments
- New build projects are underway to showcase appropriate solutions in areas of new development.

A Place to Feel Good

8a Active Spaces

- All Local Development Plans include policies and/or supplementary guidance to create and enhance green networks and show opportunities for new networks in their proposals maps

- A framework for open space standards (including quality of greenspace) is in place for CSGN area
- Open space standards adopted by x Local Authorities
- X Local Authority SOAs include indicator on the proportion of people/households (in settlements over 3000 population) within 300m of accessible greenspace of more than 2ha which is being actively managed for community use
- Levels of participation in the outdoors are increasing.

8b Active Spaces

- John Muir Trail is established and promoted; Work ongoing to enhance facilities and encourage use
- Existing routes within the network of longer distance routes are collectively promoted; progress is being made in addressing priority network gaps, and improving existing routes
- Progress has been made in encouraging establishment and uptake of Active Travel schemes by key employers, and these cases are well documented and promoted; plans are in place to progress further schemes.

9 Growing Spaces

- Barriers to progress have been identified and are being addressed
- Design guidance is in place to address planning and neighbour concerns and has been shared widely
- Demand is being met through a combination of formal allotments and informal growing spaces being developed on public and private land, including temporary gardens on land earmarked for development.

A Place to belong

10a Places for Life and Learning

- All local authorities recognise the greenspace value of the spaces between homes in their Asset Management Plans
- Public and social landlords provide opportunities for tenants to become involved in managing the spaces around their homes (can this be quantified?)
- The proportion of space around homes given over to hard elements (car parking, tarmac, paving) is reducing (do we know what the level is at the moment?) in favour of sustainable natural drainage, planted and natural areas.

10b Places for Life and Learning

- Scottish Government school building programme/policy explicitly recognises importance of availability of greenspace for pupils wellbeing and its value as an educational resource
- All Directors of Education, school estate managers and headteachers recognise the importance of access to high quality greenspace for a child's wellbeing and as an educational resource
- Analysis undertaken to identify schools with a) poor quality greenspace where there are b) opportunities to create new or improve existing greenspace and c) a strong appetite to make better use of greenspace
- A significant number of new build schools incorporate high quality greenspace/a natural play facility within the grounds
- X number of training/CPD events held for teachers in the CSGN area
- Number of teachers confident/trained to use outdoor spaces for learning has increased significantly
- Network of good practice exemplars identified/created across the CSGN area and supported to disseminate their learning to the education sector.

CENTRAL SCOTLAND GREEN NETWORK

Report to: CSGN Partnership Board

Date of Meeting: 27 January 2012

Subject: John Muir Trail technical survey

Ref: Paper 3

Purpose of Report

This paper provides Board members with a summary of the initial findings from the John Muir Trail technical survey, including priority works and cost estimates.

Recommendations

The Board is asked to comment on:

- Proposed changes to the route alignment
- Cost estimates in relation to 1) the main route, and 2) the Glasgow spur
- Priority afforded to the Glasgow spur implementation in time for 2014

Background

A technical survey has been required to assess route options, identify all necessary paths and signage works, and estimate costs for implementing and managing the route. The work was commissioned to consultants in October. Field work was completed by end December and an initial data analysis has been undertaken. A full report will be available in February. A workshop on 6 February has been organised to present the study findings to the interested local authorities (10 + National Park) and key partners.

Study Parameters

The full proposed route has been subject to a “walk-over” survey covering Dunbar to Balloch (the original proposal), Balloch to Helensburgh (to create a proper east to west coast-coast route as suggested by some consultees), and Strathblane to Glasgow (the Glasgow spur). Survey criteria and measurements have been based on recognised good practice guidance, including providing for the least restrictive option in terms of managing slopes, boundaries, width and headroom. A key assumption has been that the route should be suitable for walking and cycling throughout, accepting that specific cycling alternatives would be required for main sections of the route deemed not suitable for cycle touring. Feedback from the British Horse Society is that horseriding is not feasible along the entire route, largely due to busy road crossings and terrain issues. However, in some locations, local riding circuits can include sections of the route.

Study findings

Major route re-alignments and additions

The main proposed route changes from the original proposal are highlighted below.

Callander Estates, South Falkirk. While the existing route is satisfactory, the Estate has offered an alternative loop between Hallglen and the Falkirk Wheel which offers better views, particularly north to

the Ochils. Route improvements are required and Callander Estate plans to apply for SRDP funding to achieve this. This would be a better route option than the existing one.

Strathblane – Balloch. The original proposal was for a route via the Kilpatrick Hills with a new route to be created following tree felling within a forestry plantation. The new proposed route via Dumgoyne, Killearn and Gartness is considered more favourable as the need for path works is less, and the predominant “Pipeline track” passing under the Campsies escarpment and Dumgoyne Hill has magnificent views. This route option also provides the opportunity to link Killearn into the route.

Helensburgh – Balloch. A short extension of 7 miles would take the route to the popular coastal resort of Helensburgh, thus creating a complete coast to coast long distance route. This route section would follow an historic coffin route to reach a hill top above Helensburgh offering excellent views of the Firth of Clyde and beyond. This would provide a more dramatic and memorable ending to the route, compared to the pleasant but “quiet” approach from Gartness to Balloch on single track roads. It would also make up for the loss of the Kilpatrick Hill section. Helensburgh has a very good train service and a ferry service to Gourrock.

Strathblane to Glasgow Spur. A suitable route has been found which links Strathblane to Milngavie via Mugdock Country Park and the West Highland Way, to continue to Glasgow via the River Kelvin Walkway. This latter section is of strategic importance for recreation but can only be safely and successfully promoted if significant upgrading is undertaken.

Priority works and costs

Analysis is ongoing at this stage and there are still decisions to be made on what level of improvement works are required and how best to progress these, which will affect final costs. An overview of costs is shown at Table 1 with a breakdown for local authority areas. The estimated costs cover the works required to deliver and promote a quality route (satisfying Scotland’s Great Trails minimum criteria) by 2014, and further improvements to enhance quality post-2014. Works on the ground include path surfacing, drainage, gates, fencing, bridges, signposts, waymarkers, and information boards. Additional promotional costs through websites, guidebook etc. are shown separately. The Glasgow Spur costs are also shown separately. Maintenance and management costs are still being assessed.

Table 1 - Estimated Costs to Implement and Promote Route

Local Authority	Total Cost	Costs to 2014	Costs post 2014
Main route			
East Lothian	40,000	25,000	15,000
Edinburgh City	20,000	20,000	
West Lothian	80,000	30,000	50,000
Falkirk	65,000	65,000	
North Lanarkshire	47,000	36,000	11,000
East Dunbartonshire	5,000	5,000	
West Dunbartonshire	15,000	10,000	5,000
Argyll and Bute	20,000	15,000	5,000
	292,000	196,000	86,000
Glasgow Spur			
East Dunbartonshire	150,000	150,000?	
Glasgow City	150,000	150,000?	
	300,000	300,000	
Main + Spur Subtotal	592,000	496,000	
Route promotion*	60,000	50,000	10,000
TOTALS	652,000	546,000	96,000

(*website, guidebook, interpretation, launch event, etc.)

The overall estimated cost to implement and promote a quality route by 2014 is approximately £250,000. Work to upgrade the River Kelvin Walkway significantly increases this cost to almost £550,000.

A funding bid has been made within SNH for £440,000, covering two-thirds of the full costs. The outcome will not be clear until later this quarter. Contributions from local authorities and other partners, e.g. Historic Scotland, British Waterways, have yet to be explored. SRDP may contribute to the preferred option through Callander Estates, Falkirk. Funding shortfalls and potential sources are expected to be clarified in the months ahead as costs are refined and partner contributions are clarified.

Discussion

Overall, the cost estimates hold no surprises, with that for the main route being close to the original estimate (£220,000). The cost for the Glasgow Spur was always expected to be high and we now know this will cost more to improve than the main route. A key issue then is the implementation priority given to the Glasgow Spur to complete the improvements by the route launch in 2014. Benefits of making the improvements by 2014 include:

- Linking both Edinburgh and Glasgow into the route
- Opening the Spur in time for the Commonwealth Games
- Offering choice of starting places and destinations
- An early demonstration of the benefits of a flagship project delivering wider benefits of improving local access provision and readily contributing to the planned wider network of long distance routes, both within the CSGN and Scotland wide.

The proposed extension to Helensburgh is considered to offer the following benefits:

- A more exciting end/start point in terms of location and route interest, overall making it a more attractive long distance route to potential users
- Improved marketing potential offered by a “coast to coast” theme
- Linking into and improving the wider CSGN and Scotland wide network of long distance routes

This, arguably, does not detract from the “John Muir” theme. The route would still pass through Balloch Country Park, with the opportunity still remaining for suitable interpretation.

The issue of funding for maintenance has already been raised by local authorities. The additional costs for essential ongoing maintenance, over and above that for the existing paths which the route makes use of, are still being assessed alongside gaps in funding and means of delivery for this routine type of work.

Author: Ron McCraw, SNH

Date: 19 January 2012

CENTRAL SCOTLAND GREEN NETWORK

Report to: CSGN Partnership Board

Date of Meeting: 27 January 2012

Subject: Report on the CSGN Landscape Audit and Action Plan

Ref: Paper 4

Purpose of Report

This paper describes the work that has been done to better understand the landscape resources of Central Scotland and how they can contribute to delivery of the vision and objectives of the CSGN.

Recommendations

The Board is asked to note and discuss the contents of the paper. In particular views are sought on:

- i) the contribution of landscapes to the delivery of the vision and objectives of the CSGN; and
- ii) the priorities and next steps proposed to develop this contribution in practice.

Preparation of the paper

This paper has been prepared by SNH with input from a range of CSGN partners. The material in it draws on the finalised landscape audit which SNH has recently completed (see [Describing and Promoting the Landscapes of Central Scotland](#)). This audit provides a first step in understanding and evaluating the landscape resource that exists within the CSGN area. This report summarises current understanding of that resource, derived from existing core landscape datasets; suggests aims and objectives for it; and lists possible actions to help realise those ambitions.

What is landscape?

Landscape is all round us, and is an important part of our natural and cultural heritage. Through the European Landscape Convention (ELC)¹, Scotland is committed to action to plan, manage and protect its landscapes and also to liaise and co-operate on landscape issues across Europe. The Convention applies to all landscapes: urban, peri-urban (urban fringe), rural and natural; the ordinary, the exceptional and the degraded; land, inland water and sea. It defines landscape as: *“An area, as perceived by people, whose character is the result of the action and interaction of natural and/or human factors.”* Landscapes therefore result from the interactions between different components of the environment, both natural and cultural. People’s perceptions are also inherent to their experience of landscape, including appreciation of its qualities and an impression of place, or local distinctiveness.

What is the landscape contribution to CSGN?

The urban and rural landscapes of the central belt provide the setting for the lives of the majority of Scotland’s population. They therefore have a significant influence on the nation’s health and quality of life. When managed well, they are critical assets for economic growth, attracting inward investment and as valued work places, and as places to visit and enjoy. They are an important record of our past, and are frequently a source of inspiration for artists and writers, both past and present. Yet they are also changing as the consequence of industrialisation and deindustrialisation, infrastructure and housing development, new forestry planting and, now, windfarms.

¹ Council of Europe. 2000. *European Landscape Convention*, Council of Europe, Strasbourg. <http://conventions.coe.int/Treaty/en/Treaties/html/176.htm>. Accessed April 8th 2011.

From this perspective, landscape planning and management are key to achieving the green network vision of the CSGN, contributing to a range of its proposed outcomes and ambitions, as follows:

CSGN Themes	Outcomes	Ambitions
A place for growth	<ul style="list-style-type: none"> • Businesses want to be based in Central Scotland 	<ul style="list-style-type: none"> • Creating high-quality environments for businesses • Bringing vacant and derelict land into beneficial use
A place in balance	<ul style="list-style-type: none"> • Natural resources are valued and managed 	
A place to feel good	<ul style="list-style-type: none"> • People feel good about their physical surroundings • Improved levels of physical and mental well-being • A reduction in health inequalities 	<ul style="list-style-type: none"> • Creating attractive, safe, and well-maintained green space or accessible countryside within easy walking distance of every home in Central Scotland
A place to belong	<ul style="list-style-type: none"> • People want to live here and move here because "...it's a great place to live..." 	<ul style="list-style-type: none"> • Everyone can use the CSGN to improve their health and well-being through physical activity and enjoying nature
A place for nature	<ul style="list-style-type: none"> • Characterful, high-quality landscapes add value to the region 	<ul style="list-style-type: none"> • Making sure that every settlement in Central Scotland sits within good-quality landscape • Individuals and communities as everyone lives in an attractive place • Businesses as the landscape supports increased tourism.

At the same time, the concept of green networks recognises that we have to think about the landscape in new ways, as a key asset which will help us to address the great economic, societal and environmental challenges of the 21st century.² Annex 1 identifies the key contributions we believe that landscape could make to the CSGN principles.

What do we know about the landscapes of Central Scotland?

The recently completed audit provides for the first time a comprehensive review, mapping and analysis of existing information of the landscapes of Central Scotland. Key findings include the following.

General

- For its size, the area has a significant diversity and range of landscape character types, comparable to any other part of Scotland.
- The landscape is rich in historic remnants and cultural interest, where different periods of human activity can be experienced.
- Over half of the area is covered by landscape designations, indicating the value people place on these areas for scenery or recreation.
- Gardens and designed landscapes, both on the national inventory, and non-inventory listings, are also numerous, making a significant contribution to the character and qualities of the landscape of lowland areas.
- Many landscapes are peri-urban in nature, accommodating both rural and urban land-uses. These places are perhaps most under pressure for landscape change and would benefit from additional effort in the management of their landscapes.

² LI Position Statement. *Green infrastructure: connected and multifunctional landscapes*. May, 2009. <http://www.landscapeinstitute.org/PDF/Contribute/GreenInfrastructurepositionstatement13May09.pdf>. Accessed April 8th 2011.

Natural Environment

- The landscape is influenced by river valleys and major estuaries. The characteristics of these valleys vary from steep, narrow valleys to open and broad meandering rivers.
- Many of the area's upland moorland offer a relatively wild or naturalistic experience, as well as expansive, panoramic views back towards the area's major settlements.
- Coastal landscapes vary considerably within the CSGN area including firths with settlements, rocky sea cliffs, broad sandy beaches and expansive sea views
- The range of lowland landscapes is varied, with rolling landform punctuated by occasional conspicuous volcanic knolls and hills, field patterns and boundary features from the 18th and 19th century or earlier, and a diverse wooded land cover including areas of historic shelterbelt and former policy woodland.

Built environment

- Cities and towns are significant components of the landscape of the CSGN. Views out to the hills or sea are often characteristic of these settlements.
- There is a richly diverse and dense network of smaller towns and villages, often of historic interest and with distinctive townscapes.
- There is extensive industrial activity and transport infrastructure, both past and present, including a significant legacy of vacant and derelict land.

Annex 2 illustrates some of these findings further.

What do we not know about the landscapes of Central Scotland?

The audit has also identified a number of gaps in our knowledge, most notably in respect to the following.

- The detailed character and quality of urban and peri-urban landscapes, despite them forming a significant component of the landscape resource.
- The identification of degraded or poor quality landscapes beyond those identified as vacant and derelict land; and, conversely, identifying if the landscape of all vacant and derelict land really is of poor quality or unvalued.
- The reasons behind local landscape designations in some cases (although the majority of development plans in production are updating and refreshing them).
- The full potential of Historic Land-use Assessment and other methods to inform landscape design, planning and management decisions.
- Analysis of landscape change, despite the significant pressures across the whole area for new forestry, wind farm development, and settlement expansion.
- The attributes of wildness or tranquillity and how and where they are experienced and valued in the CSGN area. These qualities are easily eroded and may therefore require positive planning and management.
- The contribution that the relatively dense transport links and path networks can make to facilitate access to landscapes, e.g. canals and disused railways.
- Some of the audit's data areas also remain under development, notably forestry change, wildness and also landmarks and features.

What are the priorities for future work?

The findings of the landscape audit suggest a range of detailed actions in terms of data and its application, and these are summarised in Annex 3. Key priorities are as follows:

- Facilitate better access to landscape information (e.g. LCA/HLA reports and/or maps), improve application of existing data at a strategic scale, and develop further characterisation work at a more fine grained scale and which better integrates HLA and LCA.

- Develop landscape objectives to support the planning and management of the green network and/or other specific CSGN themes e.g. woodland expansion, path networks, IHN etc.
- Develop materials to promote increased awareness of the regional diversity and quality of landscapes within the CSGN area and their contribution to quality of life and the economy of Central Scotland, including links to the Power of Ten and the Landscapes of Scotland projects.
- Develop methods for engaging the public about landscape issues, including devising Landscape Quality Objectives, seeking opinions about their immediate surroundings or their favoured places, triggering debate through the development planning process.
- Identify spatial priorities for landscape enhancement within the CSGN area

A key conclusion of the audit is the need to focus action on non-designated areas, including greenbelts and other peri-urban environments, where the need for landscape enhancement is likely to be highest and the opportunities to integrate landscape features into green network planning is likely to be the greatest. These are also the areas where many people live, and where community-based projects may have greatest impact. Drawing on strategic data of the landscape audit, Annex 4 suggests a number of priority areas for further detailed exploration.

What are the next steps?

Further discussion during Quarter 4 with stakeholders is needed to agree:

- a detailed and deliverable 3 year work plan based on the proposed strategic actions suggested in Annex 2; and
- the selection of priority areas for landscape action and the work required in them.

To develop the landscape contribution to the green network, we believe that piloting different techniques and methods of engagement at various scales in these areas will be needed. There is also a range of current work in some of these areas of Central Scotland more generally to build on – including the HLF landscape partnership projects in Clyde and Avon Valley, the inner Forth and Doon and Dee; and projects focused on urban landscapes and communities in Cumnock and Lanark. Working with local authorities and A+DS, there are also on-going opportunities to influence development planning in these areas and to improve the overall quality of development through input to design briefs, master planning and place-making processes at the landscape scale. A key opportunity exists to support and promote the wider application of the Scottish Government's series of *Design Charettes* within Community Growth Areas and planned areas of settlement expansion.

Conclusion

Better management of the landscape resources of Central Scotland is an essential part of the action required if the CSGN is to achieve the stated "step change" in environmental quality. In developing our understanding of the landscape resources – both good and bad - that exists within the CSGN area, the completed audit is an important first step in developing more specific priorities for action. It also complements other existing data on biodiversity and recreation that is informing CSGN action.

Author: **Peter Rawcliffe and Laura Campbell, Scottish Natural Heritage**

Date: **18 January 2012**

CSGN principles	Landscape contribution
<p>Grounded in nature. The CSGN should reflect local geography, landscape and ecology, building on important natural assets such as watercourses, woodlands, and semi-natural habitats. Where these have almost vanished, restoring them must be a high priority.</p>	<ul style="list-style-type: none"> • Key landscapes features incorporated in the green network • “Degraded” landscapes enhanced
<p>At scale. To achieve a ‘step change’ in the quality of the environment, woodland and recreational opportunities, which is the ambition of the National Planning Framework, we need to work across the whole CSGN area.</p>	<ul style="list-style-type: none"> • Landscapes features incorporated in the green network • Landscapes providing the setting for key parts of the green network
<p>Regenerative. The CSGN should reduce social and health inequalities as well as repairing the physical environment. Priority for action should be worked out, at least in part, by identifying where there has been significant environmental damage close to where people live.</p>	<ul style="list-style-type: none"> • Landscapes improved close to where people live and work • Priority areas for landscape enhancement or creation identified
<p>Life enhancing. There is more to the CSGN than simply providing it. For it to be a success, it needs to be animated. This means it is vital that members of the public use and enjoy it actively (for example, for walking and cycling to school and work) and for recreation, relaxation, education, and community activities.</p>	<ul style="list-style-type: none"> • Landscapes improved close to where people live and work • Opportunities to enjoy some of the finest landscapes in Central Scotland increased • Increased understanding and awareness of the landscapes of Central Scotland
<p>Connected. The CSGN is about social and physical links to join communities and greenspaces together and to provide access to these. We must protect existing strategic green and blue spaces and links so that we can focus resources on improving the quality of these and adding to them. Where green or blue spaces have been reduced or links have become broken, we need to reverse this.</p>	<ul style="list-style-type: none"> • Landscapes improved close to where people live and work • Ecological functions of landscapes enhanced
<p>Functional and resilient. We should understand the function (or functions) of any part of the CSGN, and work to make sure it delivers these functions to a high standard. Building long-lasting green and blue connections which can be adapted will be an important challenge to make sure the CSGN delivers benefits over time and as people's needs change.</p>	<ul style="list-style-type: none"> • Ecological functions of landscapes enhanced
<p>Locally distinctive and respectful of the past. Communities should be at the heart of planning and decision-making and should be involved in developing assets, both new and old, which are important to the local area.</p>	<ul style="list-style-type: none"> • Landscape character strengthened and enhanced
<p>Harnessing the potential of development. We aim to work with developers, not against them. The CSGN will be improved and, indeed, achieved in some places by the delivery of well-designed development which protects and improves the local environment and secures key green or blue connections. The roles of decision-makers, communities and landowners will all be important and require investment in building relationships.</p>	<ul style="list-style-type: none"> • Improved landscape planning to get good developments in the right the place

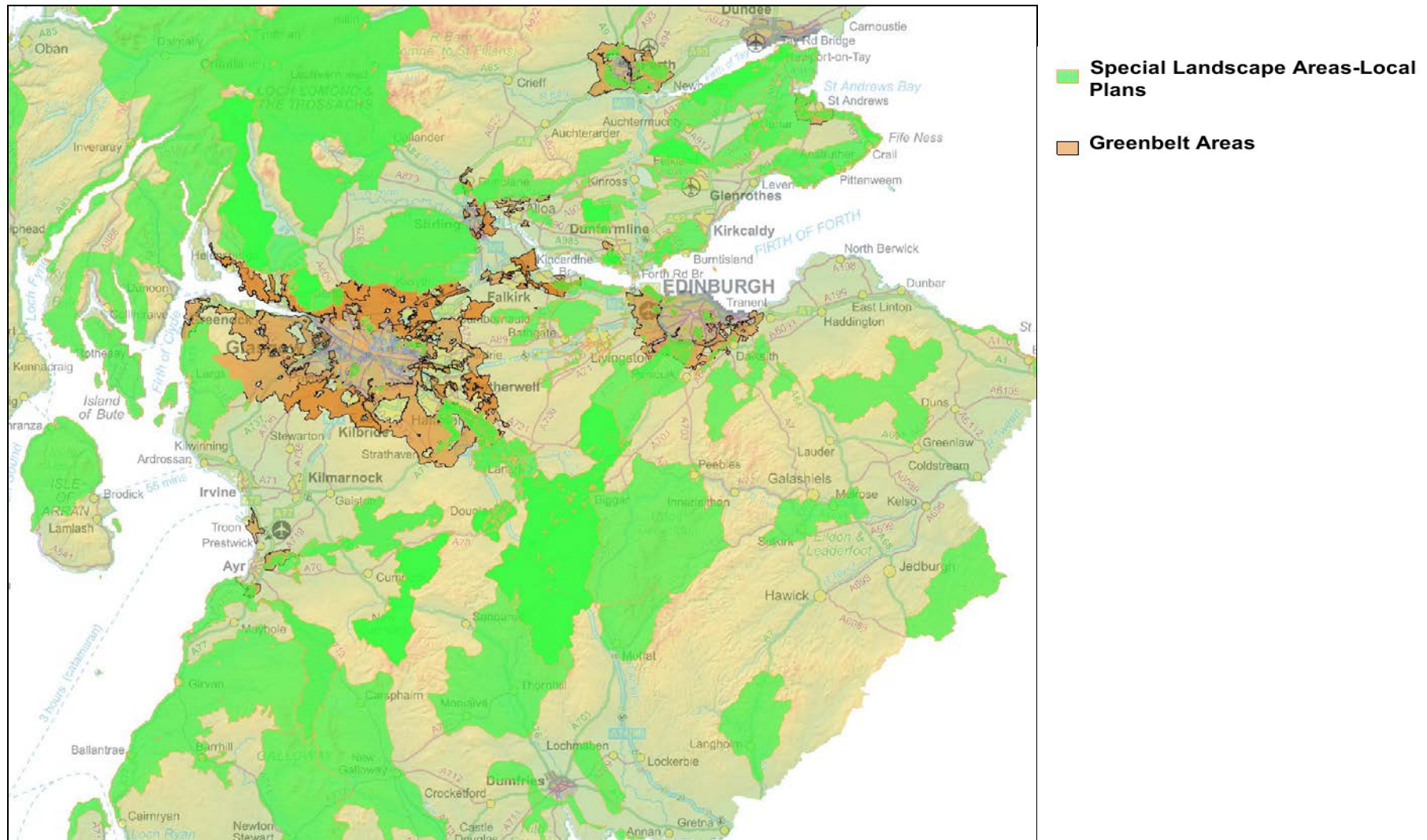
CSGN principles	Landscape contribution
<p>Beyond carbon neutral. The CSGN should not depend on the use of fossil fuels in the way it is developed, delivered and used. It should also aim to increase the amount of carbon dioxide (CO²) that is captured and stored in the area, through, for example, creating woodland and managing and restoring peatland, and care of peaty soils .</p>	<ul style="list-style-type: none"> • New landscapes created incorporating a range of small scale renewable schemes and new forestry • Promotion of appropriate habitat restoration • Positive landscape planning for large scale renewables
<p>Adding value. We need to strengthen and build on links (both physical and philosophical) between relevant local frameworks and existing initiatives, including business and tourism ventures. The CSGN process should add value by working with, supporting and strengthening local initiatives and strategies. This will help in making connections across administrative and organisational boundaries, filling in gaps where these exist, tackling barriers, avoiding duplicating services and building capacity in organisations and communities.</p>	<ul style="list-style-type: none"> • Landscape policy and practice integrated with biodiversity, recreation and historic environment interests • Awareness and value of the landscapes of Central Scotland recognised in policy and practice

Landscapes of Central Scotland – some illustrative maps

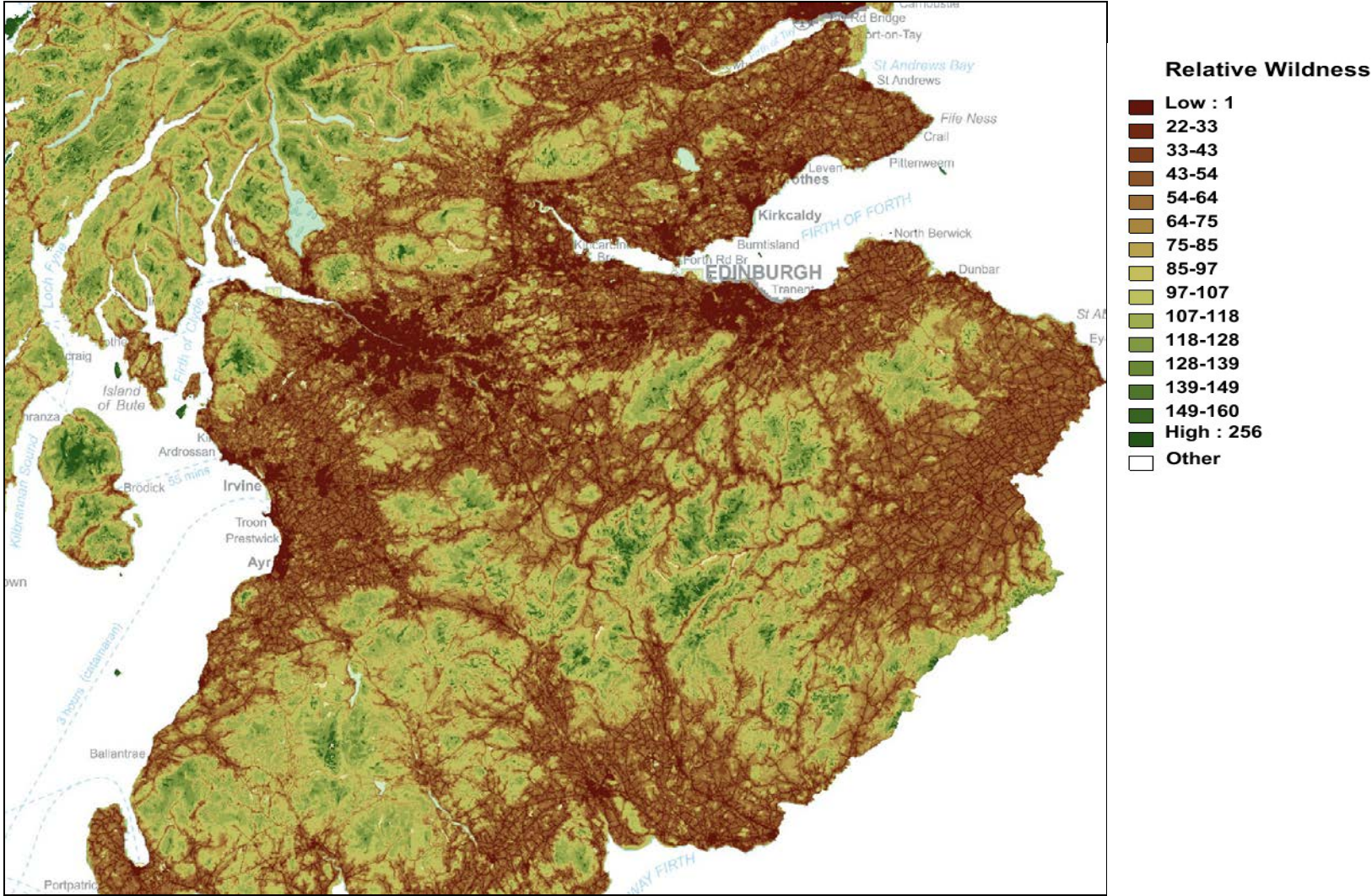
Annex 4.2

- Map 1 – Landscape Character Types
- Map 2 - Distribution of local landscape designations
- Map 3 – Wildness Mapping – relative wildness
- Map 4 - Green belt and settlements

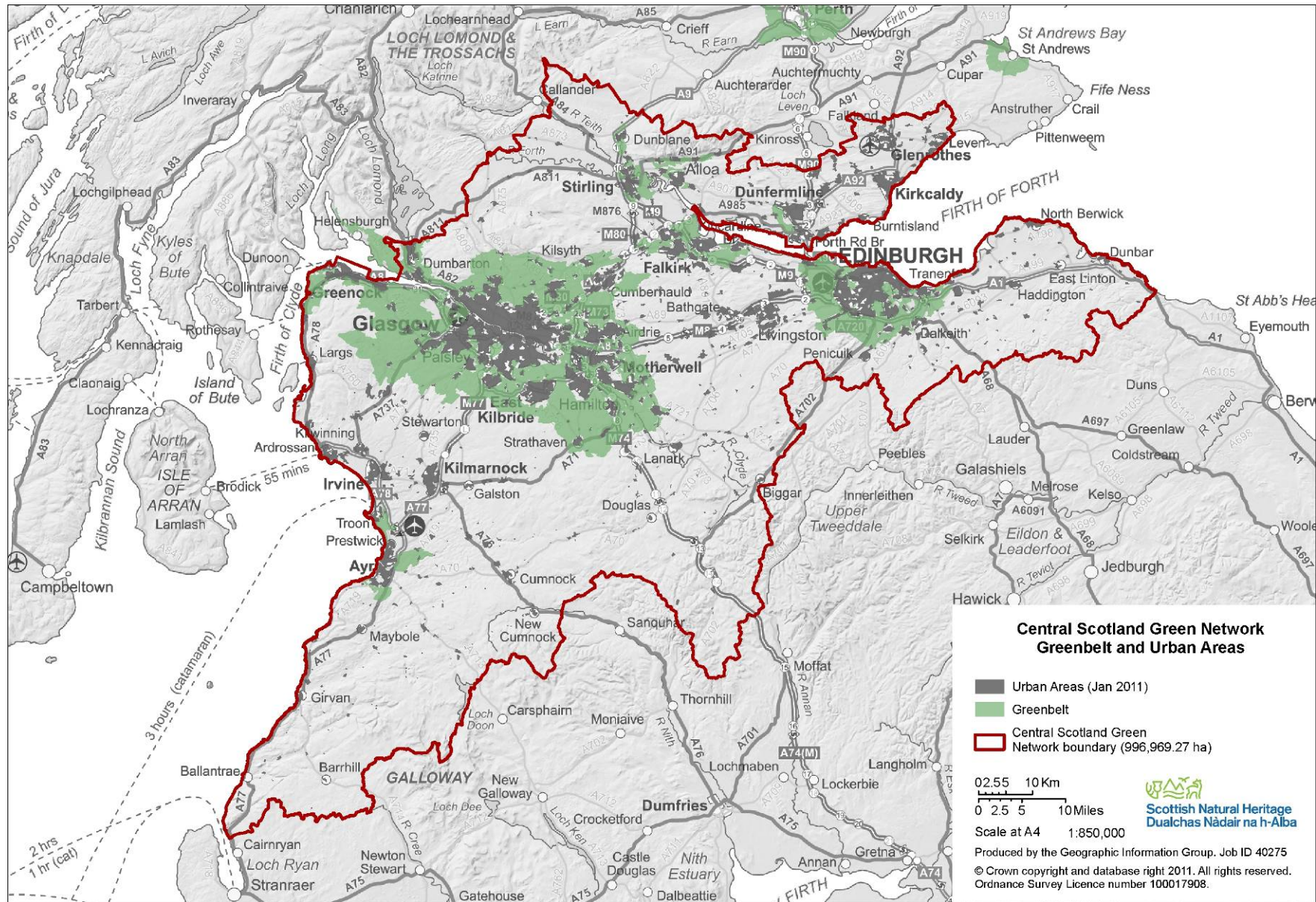
Map 2 Distribution of local landscape designations



Map 3 wildness mapping – relative wildness



Map 4 Green belt and built environment



Action	Lead / Potential partners
<p>Improving landscape information</p> <p>I. Make the key resource of the Landscape Character Assessments more easily accessible. Make the CSGN area Level 2 Landscape Character Assessment downloadable from SNH's website.</p> <p>II. Promote greater awareness, understanding and use of HLA data alongside - or as part - of existing LCA data. Test in a pilot area (such as Bowness and/or Cumnock); can HLA be used to help identify local distinctiveness, development opportunities and constraints, landmark features or foci for local access routes?</p> <p>III. Current LCA data excludes urban areas. More detailed survey and guidance could be prepared for each LCT, first being tested in priority areas. Test work on a sample range of landscape character types or areas that about the urban edge would ascertain if more detailed characterisation is required, and / or develop guidelines for landscape enhancement in these places, through work with stakeholders and communities. This will also provide an opportunity to consider the indicative IHN maps, how to integrate HLA, and collate data on greenbelt and urban edges.</p> <p>IV. The coast provides a key resource. Further work should be done to investigate it with a view to improving the planning and management of these areas and to enhance their role as a setting for a key parts of the green network, and improved connections between them and se areas non-designated landscapes.</p>	<p>SNH</p> <p>CSGN SU, FCS, A+DS, Local authorities, SNH</p> <p>Firth of Clyde Forum and Firth of Forth Forum.</p>
<p>Developing the landscape contribution to place-making; may involve more detailed LCA and HLA work in places</p> <p>I. Develop landscape quality guidelines (with local authorities, communities and other stakeholders) for selected areas</p> <p>II. Masterplanning – identify opportunities to improve the overall quality of development through design briefs and more interactive master-planning processes such as the Scottish Government's series of <i>Place-making Charettes</i>.</p> <p>III. Test place-making techniques at various scales and develop a more "common approach" amongst all the agencies. Learn from the Clyde and Avon Valley Landscape Partnership community engagement place-making activities</p> <p>IV. Implement and promulgate SG's "Green Infrastructure" publication</p> <p>V. Liaise with emerging Firth of Forth and Firth of Clyde work on coastal aspects of landscape. Parts of these could be developed into community liaison and actions.</p>	<p>Local authorities,</p> <p>SNH HS, RCAHMS A+DS</p> <p>Firth of Clyde Forum and Firth of Forth Forum.</p>
<p>Developing the landscape component of strategies and guidance</p> <p>I. Review progress and implications of plans and strategies for renewables, forestry, housing and transport to develop a better understanding of the main forces for landscape change in the CSGN area.</p> <p>II. Identify opportunities to strengthen the landscape component of development plans, relevant supplementary planning guidance and indicative forestry strategies.</p> <p>III. Consider developing CSGN-specific versions of generic landscape guidance to highlight opportunities to improve existing landscapes or to develop new ones. Possible topics could include green networks, woodland expansion, and small-scale renewable developments.</p>	<p>SNH, FCS, HS</p> <p>Local authorities,</p>
<p>Vacant and derelict land</p> <p>I. Survey work to identify areas with value (e.g. ecological, cultural) despite their officially vacant or derelict state. There could be particularly rich opportunities for community engagement in this area of work.</p> <p>II. Opportunities exist for advanced landscape planting on sites with long term vacant status, to provide green structure ahead of development, and extend the positive characteristics of adjacent landscapes into these areas.</p> <p>III. Some Vacant and Derelict Land areas may offer scope for "temporary uses". These could include habitat improvement, meadow creation, or woodland</p>	<p>Local authorities.</p> <p>HS, SNH, FCS</p>

Action	Lead / Potential partners
frameworks which would restore the original landscape pattern	
<p>Wildness</p> <p>I. The recent SNH wildness mapping could be developed further for CSGN. SNH could re-run the wildness mapping for CSGN area alone; consider also doing for the coast of CSGN.</p> <p>II. Related factors, perhaps tranquillity (via noise mapping in reverse) may be applicable in the CSGN area. This could identify those elements of wildness that are valued in populous areas, and map where they occur. Relevant policy development and guidance could follow.</p>	<p>SNH,</p> <p>Local authorities</p>
<p>Views and landmarks</p> <p>I. The importance of views out from urban areas, and their visual inter-relationship with their settings, could be developed further. Mapping could follow survey work at a broad scale that could be refined subsequently; liaise over existing work being done by Edinburgh City Council.</p> <p>II. Map and identify views and key features could be done using heuristic mapping at a strategic and local authority level, identifying key green network assets.</p>	<p>SNH</p> <p>Local authorities</p>
<p>Promoting enjoyment of CSGN's special landscapes</p> <p>I. Further work could be done to investigate the special qualities of designated areas. This would help identify what makes them distinctive and could act as pilot project for a particular form of community engagement or volunteering.</p> <p>II. Landscape character based guidance could help with route mapping work; route information including heritage pathways could help inform target areas for design work.</p> <p>III. Work with local authorities on recreational route information including enhancement of connectivity. There are potential links for peri-urban work too</p> <p>IV. Further work could be done to ensure that the strategic route network makes the most of opportunities to include key landmarks and views and to cover the diversity of finest landscapes. Given the importance of transport infrastructure for influencing the experience of the landscapes of the area, a project to develop view management strategies on key transport corridors within the CSGN area could be considered.</p>	<p>SNH, HS, RCAHMS</p> <p>Local authorities</p>
<p>Promoting awareness and pride in CSGN landscapes</p> <p>I. Increasing awareness and understanding of the regional diversity and quality of landscapes within the Central Scotland area and their contribution to quality of life and the economy of Central Scotland is an important area of work. A range of mechanisms could be identified and used to engage communities in considering and shaping future landscape change. An example is the forthcoming SNH landscape change toolkit for communities.</p> <p>II. Techniques for landscape monitoring could be incorporated when they have been agreed. SNH's landscape monitoring framework is due to be developed and one of the pilot areas is likely to be CSGN-based.</p> <p>III. Develop materials to promote increased awareness of the regional diversity and quality of landscapes within the CSGN area and their contribution to quality of life and the economy of Central Scotland. These could include links to the Power of Ten and the Landscapes of Scotland projects.</p> <p>IV. Resource promotional and illustrative materials to communicate the CSGN and place-making in terms of the diversity and quality of experience. Include good practice examples/photographs and materials and images to convey the 'vision of the future'.</p> <p>V. Develop PlaceBook Scotland to help promote landscapes in CSGN.</p>	<p>SNH, FCS, HS</p> <p>Local authorities</p>

Potential geographic areas for priority action to enhance landscape

Annex 4.4

Area	Reasons / rationale	Suggested priority?
Ardrossan to Irvine and inland to Dalry	Concentration of vacant and derelict land sites. Near population centres – opportunity to work on urban and peri-urban issues.	M
Cumnock area	Concentration of opencast coal sites and old colliery works. Few landmarks identified; opportunity to develop enhanced landscape character in collaboration with community. Opportunity to work with RCAHMs on pilot project regarding cultural landscapes, building on recent work at Bowness.	H
Grangemouth / Kincardine	Concentration of vacant and derelict land sites. Urban and peri-urban issues, and on transport routes. Several landmarks identified here: opportunity to work on enhancing these?	M
Greengairs / Slamannan	Concentration of old colliery sites and large landfill sites. Scattered settlement.	H
Fife coalfield	Concentration of opencast coal sites and old colliery works, in and near settlement areas	L
Vale of Leven	Concentration of vacant and derelict land sites. Population centres with opportunity to work on peri-urban issues. Located on transport route to west Highlands and to national park: opportunity to work with Park authority to improve one of its gateway areas.	H
Greenock Cut / Loch Thom	Concentration of vacant and derelict land sites; near urban area and transport route.	L
Edinburgh greenbelt and surrounds	Concentration of vacant and derelict land sites. Expanding urban edge. Large population centres, with opportunity to work on urban and peri-urban issues.	H
Glasgow and Clyde Valley Greenbelt and surrounds	Concentration of vacant and derelict land sites. Expanding urban edge. Large population centres, with opportunity to work on urban and peri-urban issues.	H

CENTRAL SCOTLAND GREEN NETWORK

Report to: CSGN Partnership Board

Date of Meeting: 27 January 2012

Subject: Abbreviated CSGN Risk Register

Ref: Paper 5

Purpose of Report

This paper serves to provide Board members with an updated and abbreviated Risk Register with the purpose of highlighting key areas of perceived risk to the Board.

Recommendations

The Board is asked to:

- Comment on the contents of the risk register;
- Discuss the highlighted areas of risk and suggest any further mitigating actions against these;
- Suggest areas of risk possibly not included in the current iteration of the Risk Register.

Background

The Board last reviewed the Risk Register in July 2011. At the meeting it was noted that the register was extensive; was not prioritised in respect of issues the Board are responsible for; and (as is the case with most registers) that risks are reviewed individually and there is no account taken of the potential cumulative impact of a number of risks occurring at once.

In the light of these comments we have reviewed the register and present only the high order risks. (The full register will continue to be monitored by the lead partners and the Support Unit).

Key Areas of Risk

II3 'Initiative fails to deliver a step change in quality'

This is initially rated as a high risk – after possible mitigation it stays as a medium risk.

This remains a key risk to the initiative. Given the level of ambition and the current climate this is not surprising. Critical in mitigating this will be demonstrating early wins where this is possible, reiterating the 40 year timescale of the initiative, and identifying positive trends which are/will lead to progress.

IO3 'Lead partner activity appears to reduce need for participation by other public agencies or the private sector'

This is initially rated as a high risk – after possible mitigation it reduces to a medium risk.

Both lead partners are putting a huge amount of effort into realising the CSGN. They are doing this both in their lead roles and also as part of the wider delivery stakeholder base. In this latter role there is a risk that other stakeholders, like Local Authorities, may step back from actively participating as they see the CSGN as 'somebody else's' initiative. In addition, in times of straightened finances, it may suit the wider stakeholder base and specialist stakeholders to argue that activity is being addressed by others and, therefore, they don't need to participate. However, if the CSGN is to be realised as originally conceived it is vital that all stakeholders are able to engage and contribute.

ID2 'Lack of funding frustrates new and existing mechanisms to deliver, manage and maintain the CSGN'

This is initially rated as a high risk – after possible mitigation it stays as a high risk.

This is a key risk and is likely to remain so for some time given the ongoing pressure on public finances. This risk covers both the capacity to generate new funding streams targeted at specific CSGN activities and the wider issue of funding availability to maintain those CSGN assets already established.

ID8 'Broader economic and social aims aren't met or critical thematic work (e.g. urban greening) is not delivered'

This is initially rated as a high risk – after possible mitigation it remains as a high risk.

Whilst significant progress is being made in some areas others are making little or no progress. Areas of work which have no natural 'home' in the existing agency and stakeholder infrastructure are not progressing. In failing to make progress in these areas we risk not achieving the scale and scope of step change perhaps envisaged. In a time of tightening finances and increasing organisational focus it will be harder to get bodies and organisations to open up new areas of activity than was previously the case.

PD1 'LA and other partners don't prioritise CSGN actions sufficiently'

This is initially rated as a high risk – after possible mitigation it becomes a medium risk.

The need to influence LA activities through the SOA progress is critical and is being addressed by SNH. If successfully tackled this would also help to address concerns around initiative ownership. That said with the pressures on public bodies discussed above getting CSGN activities prioritised will still be difficult, hence the residual amber risk.

PD4 'Inadequate funds to realise delivery'

This is initially rated as a high risk – after possible mitigation it stays as a high risk.

As ID2 above, even with mitigating actions, this risk remains in the highest category. Whilst the CSGN has broad support at all levels unless we can demonstrate that it is making a real difference (and for many that is a physical, on the ground difference and not 'merely' having an influence overall plans and policies) then it will be a struggle to maintain support going forward. This risk, and comment, remains as previously stated.

PD5 'Loss of partner capacity due to cuts in staffing levels'

This is initially rated as a high risk – after possible mitigation it becomes a medium risk.

The degree to which this is impacting on partner bodies is variable; it is however impacting across the board. In the short term the impact is heightened by the hiatus that inevitably comes with restructuring and role revision. Allied to this is a high degree of uncertainty in the staff of many public bodies as to their own futures and roles.

SG1 'CSGN Board fails to provide leadership'

This is initially rated as a medium risk – after possible mitigation it becomes a low risk.

This is rated as a medium risk not because of its probability, rather because of its impact were it to come to pass. The Board must play an effective leadership, focal point role if the full breadth of ambition expressed in the Vision is to be realised.

SG4 'Failure to maintain political support'

This is initially rated as a high risk – after possible mitigation it becomes a medium risk.

This is a risk which must be kept in view. The CSGN is a National Development because of political interest in it being given such a status. Were that interest to wane, then its status as a National development *could* be brought into question. There are potentially strong mitigating actions possible in this area.

Conclusion

Whilst there has been a revision of the register and a restatement of some of the risks and their impacts the critical risks remain largely as before. Those risks revolve around funding, stakeholder participation and breadth and rate of delivery. A new risk, SG4, has been introduced following a review of the register- this would have a serious impact were it to happen but there are strong mitigating measures possible. What the register fails to do, as is true of all registers, is to consider the impact of a number of risks 'coalescing' and the impact were that to happen.

Author: **Simon Rennie and Sue Evans, CSGN Support Unit**

Date: **10 January 2012**

CENTRAL SCOTLAND GREEN NETWORK
ABBREVIATED RISK REGISTER (Number Code relates to full Risk Register)

Annex 5.1

RATING

		Jan 2012
6 & less		0
7 - 14		1
15 upwards		8
Total		9

KEY

FCS Forestry Commission Scotland
 SNH Scottish Natural Heritage
 PB Partnership Board
 SU Support Unit
 CSFT Central Scotland Forest Trust

Risk Identification					Current Risk Evaluation				Response					STATUS
No.	Risk Heading	Risk Description	Risk Effect	Owner	Probability	Impact	PI Score	Risk Level	Mitigation	Residual Risk	Owner	Completion Date	Comments	↑ ↓ new
CSGN INITIATIVE														
II3	Initiative Impact	Initiative fails to deliver 'a step change' in quality	Initiative loses credibility, fails to meet ambition set out in NPF2	PB	3	5	15		Demonstrate quick wins and communicate long term vision		PB	Ongoing	Step change is long term ambition. Challenge will be to keep CSGN credible and relevant in the short to medium term	—
IO3	Initiative ownership	Lead partner activity appears to reduce need for participation by other public agencies or the private sector	CSGN not realised as originally envisaged	PB	3	5	15		Lead partners to encourage and leave space for others to act		PB	2015	FCS and SNH actively engaging with Las and NHS and supporting action by other through the Development Fund	—
ID2	Initiative delivery	Lack of funding frustrates new and existing mechanisms to deliver, manage and maintain the GN	Failure to convert plans to actions. Failure to stimulate others (especially private sector) to act Failure to deliver or look after the physical network	PB	4	4	16		Initiative is scalable (not all or nothing) seek to influence SRDP – values and ease of application		PB SNH FCS	Ongoing	Need to: influence SRDP; win support for new mechanisms (albeit any new money may be constrained in the short term); and need to looking at combining funds from economic and social strands to match with environmental budgets	—

Risk Identification					Current Risk Evaluation				Response					STATUS
No.	Risk Heading	Risk Description	Risk Effect	Owner	Probability	Impact	PI Score	Risk Level	Mitigation	Residual Risk	Owner	Completion Date	Comments	↑ ↓ new
ID8	Initiative delivery	Broader economic and social aims aren't met or critical thematic work (eg urban greening) isn't delivered	Compromised integrity and intent of CSGN to deliver transformational change	PB	5	3	15		Identification of gaps and resources/ agencies/agents to tackle them		PB	2012	Ongoing issue with solutions not yet identified	↑
CSGN WIDER PARTNERSHIP														
PD1	Partnership delivery	LA and other Partners don't prioritise CSGN actions sufficiently	CSGN marginalised in LAs and other organisations. Failure to engage wider agency community	SNH	4	4	16		Need for active relationships with each LA and to work to ensure CSGN is embedded in SOAs		SNH	2015	SNH working with the improvement service on relevant SOA indicators. FCS creating links with the NHS Need to engage with other agencies critical to delivery	—
PD4	Partnership delivery	Inadequate funds to realise delivery	Inadequate direct action and/or incentivised action by others	PB	4	4	16		LAs need to maintain GN delivery budgets whilst FCS and SNH identify new funds to sustain the Development Fund		PB	Ongoing	Value of bids to 2011 CSGN Development Fund continues to highlight demand for funding	—
PD5	Partnership delivery	Loss of partner capacity due to cuts in staffing levels	Compromised capacity to deliver especially in the short term	PB	4	4	16		Heightened effort to engage with decision-makers and need for new structures to be adopted		PB	Ongoing	LA cuts now beginning to impact	↑
CSGN BOARD & SUPPORT UNIT (SU)														
SG1	Governance	CSGN Board fails to provide leadership	Initiative not delivered as originally conceived	PB	2	4	8		Effective leadership and supportive lead partner input		PB	Ongoing	Board is now at full strength and actively engaged	—
SG4	Governance	Failure to maintain political support	Decreased status of CSGN in a future NPF3	PB	3	5	15		Effective engagement and communications with elected members		PB	Ongoing	Communications Strategy being delivered	new



CENTRAL SCOTLAND GREEN NETWORK

Report to: **CSGN Partnership Board**

Date of Meeting: **January 2012**

Subject: **Inner Forth Landscape Initiative**

Ref: **Paper 6**

Purpose of Paper

The purpose of this For Information paper is to alert the CSGN Board to the existence and potential of the Inner Forth Landscape Initiative (the Initiative) to deliver CSGN ambitions and to seek a formal statement or letter in support of an application to the Heritage Lottery Fund for a Landscape Partnership.

Background

The Inner Forth area includes the Inner Forth Estuary between Stirling and Bo'ness, its floodplain and the local communities living in the area. The area incorporates many important cultural and natural heritage features including important sites for biodiversity (a Special Protection Area (SPA), Special Area of Conservation (SAC), and Sites of Special Scientific Interest (SSSI)), Areas of Great Landscape Value and Scheduled Monuments. The Inner Forth has historical significance with features relating to early cultural development through to agricultural improvements and industrialisation. The area's landscape protects the views and setting of Stirling Castle and many other hill top built heritage features. Energy, transport and industry remain key features of the landscape today, with Longannet Power Station, Grangemouth Docks and its huge petrochemical complex being not just dominant features within the landscape but significant to the economy of Scotland. In addition to the considerable historical development pressure on the Forth, there is likely to be increasing pressure in the future.

RSPB and SNH, together with three local authorities – Falkirk, Stirling and Clackmannanshire – SEPA, Historic Scotland, CSFT and SUSTRANS are in the process of setting up a Landscape Initiative which aims to:

- develop and manage a programme of works to enhance the landscapes and habitats of the Inner Forth and to improve their accessibility and sustainable management as part of a green network.
- work with local communities and other stakeholders to prioritise and deliver actions for environmental, social and economic benefits (including training and education) of the Inner Forth landscapes.

The vision of the partnership is to work together to create an Inner Forth landscape where the natural, cultural and historical wealth of the area is revealed, valued, enhanced and made accessible to both residents and visitors.

Delivery of the Initiative will contribute to many strategic policy objectives of the Partners and Scottish Government, including the Scottish Government's Strategic Objectives (for Scotland to become healthier, safer and stronger, wealthier and fairer, smarter and greener) and delivery of the Central Scotland Green Network (CSGN). The Initiative aligns to Scotland's Landscape Charter and the principles for Sustainable Land Use set out in the Scottish Land-Use Strategy (2011). Similarly, the Initiative including access

improvements will contribute to delivery of Local Authority Local Plans and Single Outcome Agreements for Clackmannanshire, Falkirk, Stirling and the Cycling Action Plan for Scotland. The habitat management components in particular will contribute to delivery of the Water Environment and Water Services Act (2003), Flood Risk Management Act (2009), Scotland's Biodiversity Strategy (2004) and the Scottish Forestry Strategy (2006).

The Royal Society for the Protection of Birds (RSPB) has had a long interest in and relationship with the land and seascapes of the inner Forth, and has been involved in direct management of its habitat and species, particularly through its reserve at Skinflats. RSPB's Futurescapes Programme seeks to manage land in collaboration with land owners and managers at the landscape scale to deliver benefits for all wildlife and helps wildlife to adapt to pressures, including climate change. There are about 34 priority Futurescapes Initiatives across the UK, with a number in Scotland including the Flow Country and Loch Leven. The aims of the Futurescapes Programme are to:

- Build partnerships among the RSPB and other environmental groups, local communities, the private sector and relevant government authorities to develop a shared vision for a countryside fit for people and wildlife, now and in the future – and to work together to deliver it.
- Create more space for nature, by increasing the size of areas that are managed primarily for nature conservation.
- Making the countryside a better place for wildlife to adapt to climate change, by making wildlife habitats more resilient to climate change and by managing land in ways that help species move in response to climate change.
- Putting nature conservation at the heart of human responses to new pressures on the countryside, such as bioenergy production and new infrastructure development.

The Landscape Partnership Programme is an Heritage Lottery fund (HLF) and supports landscape scale interventions to:

- Conserve or restore the built and natural features that create the historic landscape character;
- Increase community participation in local heritage;
- Increase access to and learning about the landscape area and its heritage;
- Increasing training opportunities in local heritage skills.

Timetable

The timescales for delivery of the Initiative will be in part dependent on successfully securing appropriate funding and in particular HLF funding for a Landscape Partnership. The indicative timescale is as follows

Stage	Key Elements	Key Dates
Pre-Development Phase	Bid Development Partnership Strengthening Key studies to improve our understanding of the landscape and its need Community Engagement	Nov 2011 – Nov 2012
Stage One application	Broad description of the scheme with budget Scheme area defined Evidence of strong partnership Proposal for development phase	28 th February 2012
Decision on Stage One	Potential dialogue with HLF between submitting application and decision	Summer 2012
Development Phase	Developing project details	Nov 2012 – Nov 2013
Stage Two application	Landscape Conservation Action Plan	Submission no later than

	with detailed projects and budgets.	18 months from Stage 1 decision. Approx Nov. 2013
Stage Two decision		Four months after submission of Stage 2 application
Delivery Phase	Maximum of 5 years.	Spring 2014 – Spring 2017

CSGN Impact

The Inner Forth Landscape Initiative offers the opportunity to secure tangible green network benefits on the ground within a relatively short timescale. The Initiative will contribute towards delivering against all of the CSGN themes:

A Place in Balance – by working with communities, business and land owners to enhance the sustainable, long-term management of habitats, both terrestrial and inter-tidal of the Inner Forth. This will in turn secure benefits in terms of increased biodiversity and habitat connectivity, reduced impacts of flooding and improved carbon storage

A Place to Belong – by working with communities to enhance their understanding, appreciation and engagement with their landscapes through providing opportunities to volunteer and take part in projects, linking with local schools and community groups and making the most of the cultural aspects of the local landscape.

A Place for Growth – by working with local businesses to connect them to their local environment – in particular working with the NPF 2 project for the development of the Grangemouth Freight Hub – and by providing opportunities for skills development in sustainable land management.

A Place to Feel Good – by increasing accessibility to local landscape features, enhancing the sustainable transport connections in the area and promoting and supporting active involvement with land management by local communities.

A Place for Nature – by developing integrated approaches to land management that deliver benefits for wildlife as well as securing positive outcomes for land owners and communities. These approaches may include wildlife-friendly farming practices, managed re-alignment of coastlines to promote natural flood management, improving management of natural landscape features such as woodlands, wetlands, meadows and hedgerows.

Conclusions

The Initiative will only be successful if it is delivered through a strong partnership approach and in view of the strategic priorities of Government and other partners. While the Landscape Partnership funding will hopefully provide early intervention and tangible change on the ground, we anticipate that this Initiative will run for a much longer time and become recognised as an exemplar of delivery with the CSGN.

The Inner Forth Landscape Initiative Board would welcome the development of a strong partnership with the CSGN Board that reflects the joint interests in this area and the mutual benefits that can be secured through strong partnership working.

Author: **Zoe Kemp, Operations Manager, SNH**

Date: **6 January 2012**

CENTRAL SCOTLAND GREEN NETWORK

Report to: CSGN Partnership Board
Date of Meeting: 27 January 2012
Subject: Activities by FCS
Ref: Paper 7

Purpose of Report

This report provides an update on action by FCS since September.

Recommendations

The Board is invited to note the activity by FCS in support of the CSGN. Further information on any of the items below is available on request.

Thematic Work

A Place for Growth

Skills & Employability – FCS is currently working with a range of partners to support employability programmes for around 200 young people on the National Forest Estate and on land under public management (e.g. local authority and British Waterways land) involving trees, woods and forests. We are currently discussing with Scottish Lowlands Forest District proposals for continuing similar levels of activity in 2012-13, aiming to maximise value for money from partnership funding. We also hosted a successful visit from John Swinney, Cabinet Secretary for Finance and Sustainable Growth to a Forest Enterprise site at Uddingston in South Lanarkshire on 10th January, to see Wise Group trainees working on improvements to part of the Clyde Walkway and National Cycle Network. We have also had a preliminary meeting with Scottish Government officials with responsibility for employability to explore possible links to the £30M package of support announced following the appointment of Angela Constance as Minister for Youth Employment.

Greening of Vacant and Derelict Land – through the CSGN Development Fund FCS is supporting a number of projects to green Vacant and Derelict Land (VDL). In Fife, a consultant is currently looking at the potential for greening 4 vacant and derelict sites and developing associated costed proposals for the implementation phase where feasible. In Edinburgh the potential for planting of three VDL sites is currently being examined (including Granton and Craigmillar). ELGT has organised the consultation work with the relevant departments of City of Edinburgh Council, the developers and the local communities in order to come up with outline drawings and plans for the implementation phase. Restorative tree planting is also being considered for Forthbank Loop in Stirling, and applications for grant support for delivery in 2012-13 are likely to be submitted shortly.

In addition, as reported previously, Forest Enterprise is taking forward woodland planting on a number of sites in the Glasgow & Clyde Valley area. **Annex 6.1** provides brief information on each of these sites. It is worth noting that work on these sites is well advanced and Scottish Lowlands Forest District is currently, actively seeking to identify new sites where it might get involved in the next 2-3 years, given the long planning and lead-in time before delivery can begin. It is hoped that some of the work proposed under the VDL strand of the workplan will help to identify suitable sites so that momentum can be maintained and specialist skills in the FE team maintained.

A Place in Balance

Preparation of Forestry and Woodland Strategies – work is continuing to support the preparation of forestry and woodland strategies by local authorities to guide future woodland expansion across the CSGN area. The strategy for Glasgow & Clyde Valley is now complete and will be published by the end of March. The strategy for Edinburgh & the Lothians is at final draft stage, following consultation, and is expected to be finalised and launched by the end of March. The 1st draft strategy for Fife following initial stakeholder consultation is under development while strategies for Ayrshire and Stirling & Clackmannanshire are likely to be published for public consultation in the next 2-3 months. An updated spatial strategy for the Central Scotland Forest area is also now under development and will dovetail with those for GCV and Edinburgh & Lothians.

Woodland Expansion Advisory Group – the Woodland Expansion Advisory Group, chaired by Dr Andrew Barbour, is looking to provide advice on the types of land best for tree planting in Scotland in the context of other land-based objectives, and on promoting good practice and local processes in relation to tree planting so as to secure multiple benefits. The Group's "Call for Views" exercise closed in early January and the group is currently considering what stakeholders have told it. The Group will be testing its emerging conclusions with stakeholders in a series of meetings around the country in the second half of February, and its final report to the Cabinet Secretary is due in June.

A Place to Feel Good

Greening the NHS Estate – FCS and the Green Exercise Partnership (GEP) continue to provide strategic direction and leadership to promote greening in area health boards. The Landscape Design Service contract has been amended to allow an additional 6 hospitals in Ayrshire and Arran NHS are to benefit from this service.

Woodland management plans are to be completed for Ayr and Ailsa hospitals and the Royal Edinburgh hospital. NHS Greater Glasgow and Clyde have confirmed Gartnavel Royal hospital as their initial site that will benefit from the design service. In addition they have put forward an application for support of work being developed with Sowing and Growing Everywhere (SAGE) to develop a plan for community gardens and allotments at Gartnavel Royal and start preparatory work to deliver the scheme. Further details are being confirmed prior to an offer of support. Further work has been completed at Forth Valley Royal Hospital with a survey of Larbert Loch. Architecture + Design Scotland will now progress with holding a design competition for emerging practices to develop plans for a viewing platform over the Loch. In NHS Fife, Stratheden Hospital is being supported to take forward recommendations from the landscape design assessment to create 5 enclosed courtyards at the elderly wards which will provide access to pleasant and safe greenspace for exercise and contact with nature.

A Place to Belong

Community Projects Fund – the previous update noted that a £50,000 grant scheme had been established, in cooperation with the regional green network partnership organisations, to provide grants of up to £1,000 to community groups wanting to take action to improve the green network locally. The Fund proved popular and was oversubscribed across the CSGN as a whole. A final total of £57,000 was awarded to 65 projects and a list of successful projects has been distributed separately to Board members.

CSGN Learning Spaces Grant Scheme – the previous update noted that a £50,000 grant scheme had been established to provide up to £500 to schools and nurseries to develop school grounds and neighbouring woods and greenspaces for learning and natural play; to purchase outdoor learning equipment; or to contribute to staff training and the purchase of resources for outdoor learning. The grant scheme opened for applications in September and proved extremely popular, with 129 applications being received. £45,000 has now been allocated to 93 nursery, primary and secondary schools and we expect to allocate the last of the funding before the end of January.

Progress with WIAT Key Sites - a Forestry for People application was recently approved to support the Outdoor Woodland Learning and Heritage project in Craigmillar, Edinburgh. The

project builds on the success of the Edinburgh Forest School Partnership through the provision and support for an education programme comprising a training programme for teachers and educationalists, a volunteering and a youth programme run in parallel to secure sustainability of the project.

A Place for Nature

Nothing to report.

Strategic Enabling

Championing the Vision

Communications Strategy – meetings with Civil Servants in the Scottish Government and its agencies continue. To date we have discussed the CSGN with officials responsible for planning, natural resources, regeneration and vacant and derelict land, grow your own, the Cities Strategy, the NHS estate, and housing investment and sustainability. Further meetings are being sought with officials responsible for sustainable transport and environmental quality. Some of these meetings are beginning to bear fruit, for example, positive references in the Regeneration Strategy, input to proposals for the forthcoming VDL Fund and support from the Grow Your Own budget for the CSGN Development Fund.

Establishing a Supportive Environment

Nothing to report.

Identifying and seeking ways to remove barriers

Woodland Creation Planning Grant – a new grant to help prepare productive woodland creation proposals is now available from Forestry Commission Scotland. The aim of the Planning Grant is to promote productive woodland planting by ensuring that woodland creation proposals are based on good knowledge of the sensitivities and local issues and are well integrated with other land objectives so as to secure multiple benefits. The Planning Grant will be available from 10 January 2012, for an initial 12 month period (at which point FCS will assess uptake) and is available for planting proposals for 30 hectares or more. Grant rate is £100/ha with a maximum payment of £20,000 and it is hoped that this will help encourage more proposals for new woodland creation to come forward.

Supporting and sharing good practice

Case Study on the Woods in and Around Towns Programme – A consultant was recently appointed to develop a case study to illustrate how the WIAT programme has been implemented in Falkirk since 2005. We intend to use this to highlight lessons learned and to inspire action under the WIAT programme elsewhere.

Data Management

Nothing to report

Monitoring and Evaluation

NPF2 Update – FCS recently provided an update on progress with the CSGN to Scottish Government Directorate for the Built Environment for inclusion in their update on progress with the implementation of NPF2. The NPF2 Monitoring Report will be finalised shortly and submitted to Ministers for approval and publication. It is likely at this point that decisions on a review of NPF2 and the preparation of NPF3 will be made.

Conclusion

FCS has been taking forward a range of different strands of activity, in partnership with a range of organisations, to support the delivery of the green network on the ground. We would be happy to

provide more information on any of these and/or to arrange for a detailed briefing, meeting or visit for Board members if that would be helpful.

Author: **Neil Langhorn, FCS**

Date: **16th January 2012**

VACANT AND DERELICT LAND SITES BEING 'GREENED' BY FOREST ENTERPRISE SCOTLAND IN GLASGOW AND CLYDE VALLEY

1. Bothwell Park

Bothwell Park is the largest single area on the Vacant and Derelict Land Register in North Lanarkshire, now that the former Ravenscraig steelworks in nearby Motherwell is being redeveloped. This project seeks to develop a community woodland in an area of 49ha within a triangle of land formed by two main line railways and the Hamilton to Bellshill dual carriageway (A725). The population within 4km of the Bothwell Park boundary is c 96k, almost entirely in the WIAT zone, with an average SIMD deprivation of 60-70% (i.e. the area is in the most 40% of deprived communities in Scotland).

Bothwell Park is being developed by FES as green infrastructure and will be suitable for the local community. Site works have been tendered and are currently underway managed by FES. Remediation and planting of this site should be complete by April 2012. The desired end result is that the area can be removed from the V&D land register.

2. Greenoakhill

Greenoakhill is 100ha in size and located 5 miles east of Glasgow City centre adjacent to the Carmyle, Broomhouse and Mount Vernon communities in Glasgow. The site is an active landfill site and therefore the implementation will be phased. FES have delivered Phase 1 (southern of the M74) in 2011. A remediation plan followed by a workable forest design plan for phases 2, 3 and 4 is being currently being developed and will be complete and approved by April 2012. Work on site covering Phase 2 is scheduled to take place late summer / autumn 2012.

The three core objectives of the project are:

- Over a 30 year period develop a community wood, involving the predominantly working class communities of Carmyle, Broomhouse and Mount Vernon in Glasgow to develop their pride in the site.
- Through woodland establishment and sculptural art enhance the landscape and visual aesthetics of the site to act as M74 gateway entrance to Glasgow, by 2020.
- Contribute to the River Clyde habitat network, through the establishment of appropriate habitats including riparian woodland.

A fourth minor objective is:

- Act as a demonstration site for woodland reclamation on landfill sites.

3. Cuningar Loop

The Cuningar Loop is a unique 27ha area of Vacant and Derelict Land at the heart of the Clyde Gateway area in the east end of Glasgow. The site is owned by South Lanarkshire Council (SLC) and is bounded on three sides by the river Clyde. The sites former industrial use as a quarry and latterly a land fill site mean that the local communities of Dalmarnock, Rutherglen and Parkhead, some of the most deprived communities in the country, have little or no connection with the site.

Cuningar Loop lies adjacent to the Glasgow 2014 Commonwealth Games Athletes Village, Velodrome and Sports Arena which are all currently under construction. It is proposed that the site will become a green legacy of the Games, providing the existing and newly developing communities, as well as visitors, the opportunity to experience a unique woodland park at the heart of the city. The park will encourage active lifestyles through the provision of recreational opportunities and links to sport, the environment and the commonwealth.

The project is being managed by a full time project manager and is currently within a feasibility phase, which follows the HM Treasury approved business case model. A design team has been appointed to develop design options and costings and contains both architects, engineers, cost consultants and forest planners. A strategic business case has been approved and an outline case is being developed and will be presented to the management board in May 2012.

It is proposed that the first phase of development of the site will be complete in time for the commonwealth games in 2014.

CENTRAL SCOTLAND GREEN NETWORK

Report to: CSGN Partnership Board

Date of Meeting: 27 January 2012

Subject: Activities by SNH

Ref: Paper 8

SNH ACTIVITY UPDATE

Purpose of Report

This paper provides an update on SNH activity in support of delivery of the CSGN since the last Board meeting.

Recommendations

The Board is invited to note the activity by SNH in support of the CSGN. Further information on any of the items below is available on request.

A Place for Nature

LIFE+ project proposal – ‘towards an ecologically coherent CSGN’

SNH is developing an application to the EU LIFE+ fund for a project to reduce habitat fragmentation in the CSGN area. If the application is successful the project will:

- attract large cash and resource funding from the EU and partners to implement big picture habitat connectivity strategically over a significant area of Scotland;
- help CSGN to deliver on what we've been charged to do by Ministers;
- Provide a highly visible and focused flagship project to co-ordinate action on the ground and celebrate all that the CSGN could be about.

There are links to delivering many of the CSGN's land use actions - such as woodland expansion, sustainable flood management, greenspace/green infrastructure improvements, and others.

This application will help to reduce habitat fragmentation and improve connectivity across the CSGN, through targeting, facilitating and implementing action on the ground. It is anticipated the project would run over 4 years with early estimates of costs between £3m - £5m.

The deadline for applications is early summer and between now and then, SNH will be in discussion with partners to define the project details and the application form. Further information will be brought back to the Board in due course.

Integrated Habitat Network

The IHN project is progressing well.

- IHN Key messages agreed and published on web
- IHN map layers available internally (Geoview) and externally (shape files on Natural spaces)
- Continued input to Development plans
- Regional IHN steering group meeting held
- IHN and development plans internal planning guidance produced for staff
- Long march project draft report received
- Open Mosaic Habitats reports received

A place to feel good

Medal Routes initiative

Ramblers Scotland, with funding support from Scottish Natural Heritage (SNH), Paths for All and Ramblers Holidays Charitable Trust, is embarking on a new project inspired by the Olympic and Commonwealth Games. This project - 'Medal Routes' - aims to encourage everyone to enjoy the outdoors by taking regular short walks on existing paths in their own neighborhoods'. Using local paths, Medal Routes will help you to explore what's right on your doorstep, and to get fitter as you progress from Bronze to Gold routes.

In 2012, the project will see 50 Walking Hubs being developed throughout Scotland, with a focus on the CSGN area. Each Walking Hub will have three Medal Routes of different lengths (Bronze approx 15 minutes, Silver approx 30 minutes and Gold approx 1 hour). The walks will be circular, starting and finishing at the Walking Hub. A Walking Hub could be a community centre, a school, a workplace, a hospital - anywhere that people can easily walk from. All Medal Routes will be available to download from the Ramblers Scotland website. This information and links is now on the SNH website. <http://www.snh.gov.uk/enjoying-the-outdoors/what-can-i-do/get-fitter/medal-routes/>

John Muir Trail

This project is progressing well. The board will receive an update paper at the meeting.

Long Distance Routes

This project is progressing.

- Draft network map prepared and being digitised by SNH GIS staff
- Draft route information and data prepared
- Draft network proposal prepared
- Liaise with LAs as required to refine information
- Prepare for LA consultation on proposal – subject to progress

Active Travel

This project is progressing well.

- Strategic overview: report parameters established; discussions have been held with Active Travel consortium partners (Sustrans, Living Streets, Cycling Scotland); Drafted LA questionnaire aimed at establishing baseline information
- Case Studies: a long list of potential case studies drawn from the Active Travel consortium is being considered and refined
- Development of benchmarking tool and active travel indicator: Discussions underway with SG to ensure there is no duplication between SG and Paths For All work – this is essential before any further action

Paths & Places Proposal

SNH is developing a new project proposal with a specific focus on CSGN. The overall aim of the project is to improve the provision, promotion, use and management of public outdoor 'places to go to' in the CSGN area which are managed and promoted for enjoyment and recreation in broadly natural 'green' settings. The key elements of the project include: developing a better understanding of the 'places to go' resource.; improving resource promotion and information provision; improve linkages between these destinations; and making the most of physical opportunities to create new places & linkages to strengthen the CSGN. Local nature reserves are likely to be an explicit part of this project.

A Place for Growth

SNH's internal guidance on development planning and green networks has received considerable support from Scottish Government and the Support Unit. There is an intention to publish it on the SNH website with links from other sites and promotion to key planning contacts.

SNH gave a presentation on CSGN planning & local development related matters at the meeting of the Development Planning Regional Forum (West of Scotland).

SNH continues to have discussions with the 19 Local Authorities in the CSGN area on Local Development Plan issues. In terms of formal responses, the following summarises recent activity:

Glasgow SNH has responded to the Main Issues Report.

East Renfrewshire SNH has responded to the Main Issues Report.

Stirling SNH has been consulted on the Main Issues Report. A draft proposal has been published.

Falkirk Proposed Plan is now out for consultation.

Edinburgh SNH is a consultee to the Main Issues Report which is due at the end of January.

East Renfrewshire SNH has responded to the Main Issues Report.

Author: Catriona Scriven

Date: 18 January 2012

CENTRAL SCOTLAND GREEN NETWORK

Report to: CSGN Partnership Board
Date of Meeting: 27 January 2012
Subject: Activities by CSGNSU
Ref: Paper 9

Purpose of Report

This report provides an update on action by the Support Unit since mid-November 2011.

Recommendations

The Partnership Board is asked to note the action taking place by the Support Unit.

CSGN Work Plan 2012-15

Over the last two months we have been drafting the new work plan and working with the Lead and other partners to pull together the two main annexes which set out Board and Lead partner priorities. Paper 2 covers the work plan in more detail.

Thematic Work

The Unit has been active and making progress in the following areas:

A Place for Growth

Places for Business and Enterprise – We have begun work for FCS in collating and reviewing previous studies, and collecting and analysing Vacant & Derelict Land (V&DL) data to inform planned discussions with NHS about greening the NHS estate.

Green Network Businesses – There has been some limited progress on identifying potential green network case studies.

Green Skills – We have had a number of meetings with training and employment providers to gain further intelligence about the current work and employment programmes. This has been fed into the section on Employment & Training in the draft work plan.

A Place to Feel Good

Health Promoting Environments – A summary report was produced and supplied to FCS/SNH staff. Dissemination has been delayed whilst FCS discuss next steps with the Green Exercise Partnership.

Growing Spaces Audit – The report has been completed has been passed to FCS and SNH for comment. A summary version is now being prepared.

Allotment Design Guide – Agreement has been reached with the Scottish Allotment and Gardens Society (SAGS) to produce a design guide. The main funding will come from CSGN through the Support Unit (SU) with small amounts from Scottish Government and SNH. The SU will provide oversight of the project and manage invoicing. The hope is that sufficient progress will have been made to allow SAGS to present the guide at a Sharing Good Practice event planned for 17th May.

A Place to Belong

Places for Life and Learning – A summary report has been produced and supplied to FCS/SNH staff for comment.

Social Spaces – By the time the Board meets, we will have made a presentation to senior staff at the National Trust for Scotland.

A Place for Nature

Clyde River Basin Management Planning (RBMP) Delivery Project – The steering group is now fully reformed with the 3 staff now back from maternity leave. A meeting is planned in late January to bring everyone up to date and agree the way to implement the project recommendations.

Forth Sub-basin District RBMP & IHN project – The desk based GIS side of the project is complete, with 4 sites of approximately 8km length of river selected for feasibility studies focusing on river restoration, habitat creation and recreational opportunities. These are being surveyed to enable the final reports and recommendations to be produced in March.

Strategic Enabling

The Unit has been active and making progress in the following areas:

Championing the Vision

CSGN Vision – We have begun distributing the new vision leaflets, with MSPs and councilors receiving copies.

Communications Strategy – In November, there were workshops with the Board and then FCS/SNH staff to aid understanding within the Partnership Board and Lead Partners of activity undertaken to date within Branding and Communications, and to facilitate a discussion on key challenges & opportunities. A report has been produced and is with the Chair, FCS and SNH for checking prior to distribution.

Website – Two new sections have been created: Monitoring and Evaluation, which includes the 2010 Baseline Report; and CSGN Regional Advisory Forum, where minutes will be made available.

Press & PR – We have continued to have good coverage over the winter with articles also starting to appear in professional/technical journals.

The Power of the CSGN – greenspace scotland undertook a pilot phase for the project in the autumn. This has thrown up questions about the survey process and data handling and analysis issues which the SU has been advising on. The plan is for the steering group to meet at the end of January to review the pilot and agree next steps.

Establishing a Supportive Environment

Stakeholder Mapping and Engagement – covered under Communications Strategy above.

Engaging with the regional partners – The CSGN Regional Advisory Forum will meet on the 10 February. Several of the members have provided input into the work plan annexes and contributed thinking on the proposed LA Concordat.

Data Management

Scotland's Greenspace Map (SGM) – Following several months of analysing issues that have arisen in the SGM data, the consultant AECOM has now completed a full review of the data. CSGN SU has been providing significant technical support to greenspace scotland during this process. The data will now be rechecked by partners and disseminated by the CSGN SU in early February. The technical working group (which includes representatives from CSGN SU, FCS and

SNH) met for the first time in December and will be looking at issues around future updates and improved dissemination methods.

Greenspace Accessibility Study – Work is underway to develop a pilot project which will look at generating a measure of greenspace accessibility by pedestrians within the CSGN area. This will build on the SGM data (see above) and existing studies. The indicator will be a key piece of data which can be used by partners, local authorities and researcher bodies such as The Medical Research Council who are involved in the pilot stage.

Monitoring and Evaluation

2010 Baseline Report – We have been distributing hard copies of the report to organisations interested in research/data analysis etc. as well the bodies which contributed data.

Staff Resourcing – Timesheet records for the last quarter of 2011 record that staff time on CSGN activities (Support Unit and development time in Stirling & Clackmannanshire) equated to 4.4 Full Time Equivalents.

Conclusion

We have continued to make good progress over the last two months.

In the next two months we will focus on:

- Completing the work plan for 2012-15
- Progressing work on V&DL
- Supporting SAGS in taking forward the Allotment Design Guide
- Disseminating the Learning and Growing audits
- Creating a planning section on the website
- Progressing the Power of CSGN (through greenspace scotland)
- Preparing for the 2012 CSGN Forum

Author: **Sue Evans, CSGN Support Unit**

Date: **12 January 2012**